



SECCCA STRATEGIC PLAN 2021-2024

STRATEGIC PLAN HIGHLIGHTS

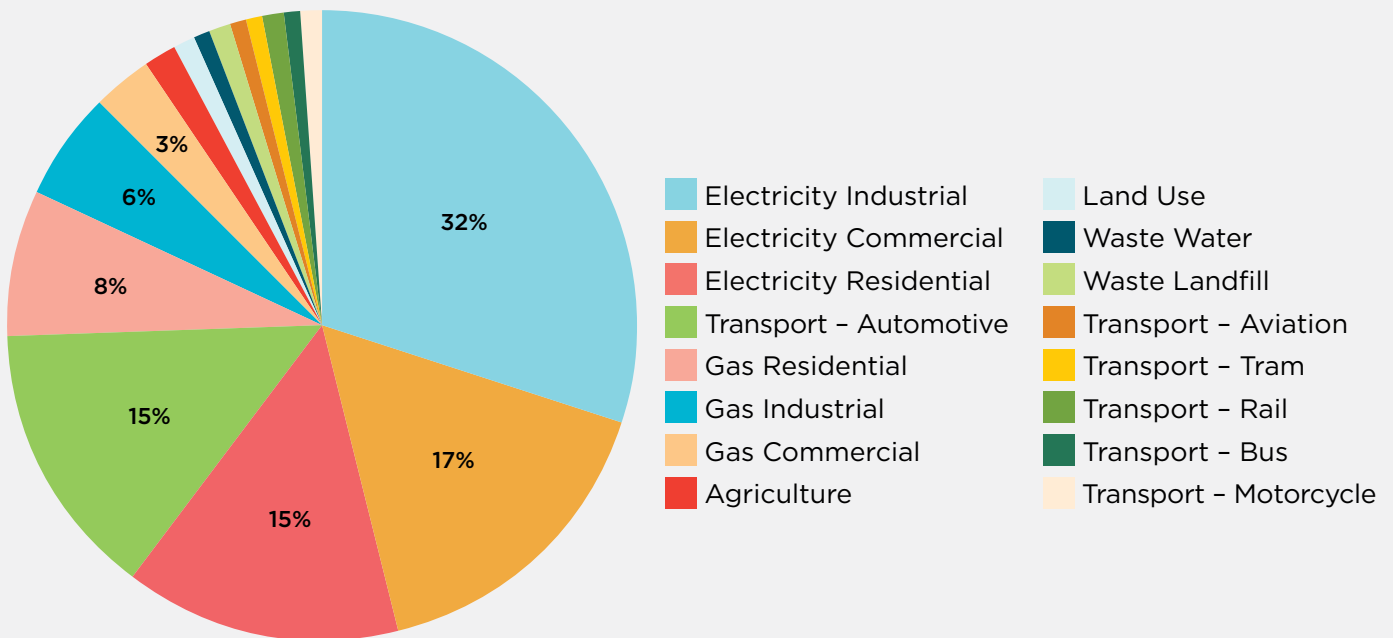
VISION

The south east of Melbourne is a thriving and productive region that has a safe and sustainable climate.

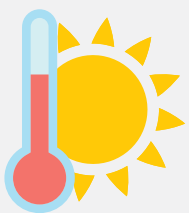
GOAL

- Provide leadership for the region to reduce greenhouse gas emissions and build climate resilience.
- Achieve zero council corporate emissions and lead action to achieve zero community emissions.
- Prioritise investment to reflect the gravity and urgency of the climate emergency.

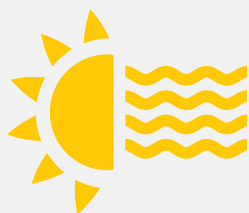
SECCCA REGION EMISSIONS PROFILE



SECCCA REGION PROJECTED IMPACTS OF CLIMATE CHANGE



**INCREASED
AVERAGE
MAXIMUM
TEMPERATURE**



**MORE
HEATWAVES**

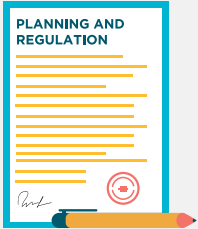


**EXTREME
WEATHER
EVENTS**



**INUNDATION AND
SEA LEVEL RISE**

KEY ADVOCACY ISSUES AND OUTCOMES



PLANNING AND REGULATION



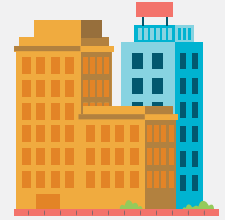
LEADERSHIP AND COLLABORATION



FINANCE AND RISK



PROCUREMENT



INFRASTRUCTURE AND SERVICES

ACCELERATING REGIONAL CLIMATE ACTION



TABLE OF CONTENTS

ACKNOWLEDGMENT OF COUNTRY

SECCCA respectfully acknowledges the Traditional Owners of the land on which we work, and pay respect to their Elders, past, present and future.

CHIEF EXECUTIVE OFFICER'S OVERVIEW

Since the development of the 2019 – 2024 Strategic Plan, there has been significant change in the context in which South East Councils Climate Change Alliance (SECCCA) and member councils are operating. SECCCA as an organisation and most SECCCA members have declared a climate emergency, acknowledging the existential threat that climate change presents and the need to urgently reduce greenhouse gas emissions.

SECCCA achievements

Some key achievements of the 2019 – 2024 Strategic Plan have been the strengthening of SECCCA's financial position; the establishment of the Councillor Advisor Group (CAG); stronger stakeholder relationships; and the completion of key advocacy initiatives. Projects have included calculating a regional emissions profile and calculating a regional emissions reduction target and mapping the climate impacts across the region.

The changing context

Since 2019, there has been an important shift in the regulatory framework affecting local government. This includes the *Local Government Act 2020* now requiring councils to plan and mitigate climate risk, Municipal Public Health and Wellbeing Plans required to address climate change, and asset management plans required to address climate risk.

The Victorian Climate Change Strategy now sets an interim emissions reduction target, and a Zero Emissions Vehicle Roadmap and Gas Transition Roadmap have been developed by the Victorian Government.

SECCCA and the other Victorian Greenhouse alliances are recognised for their important role supporting local government to address climate change and facilitating regional action.

Global political trends have changed markedly too. Investors are heralding the end of fossil fuels, the prospect of carbon tariffs is very real and the Federal Government is being obliged to commit to a 2050 zero emissions target. These forces will impact the economies and wellbeing of the south east Melbourne region.

Member engagement

In 2021, our Management Committee, together with the CAG, agreed to refresh SECCCA's Strategic Plan to ensure we remain cognisant of the changing political landscape, continue to meet the organisation's vision, and can clearly articulate the strategic approach for the remainder of the Plan.

A strategic planning session was held in April 2021, bringing together the CAG, member council officers and SECCCA officers. This group reviewed the organisation's vision, purpose, goals and advocacy objectives. During the session, participants were invited to propose new climate change projects and these have been evaluated together with projects already committed.

The overwhelming feedback from the strategic planning session was members' aspiration for SECCCA to play a leadership role across the region to accelerate climate action. Intensifying SECCCA's advocacy and communications efforts is considered an important priority.


Members understand that taking transformational action on climate change at any significant level will require equally significant investment to reduce emissions.

Members also recognise that by working regionally and collaboratively, climate change outcomes for councils and their communities can be delivered cost effectively. Councils and communities also significantly benefit from knowledge sharing and capability across the region.

The new Strategic Plan

To this end, a number of projects and initiatives have been considered, evaluated and then prioritised according to their capacity to achieve SECCCA's vision, goals and purpose, as well as the climate impact they deliver to councils and the resourcing required.

This refreshed Strategic Plan will guide SECCCA's activities for the next few years and, subject to funding, elevate our action on climate change, ensuring we're contributing to the worldwide effort to limit global warming to 1.5 degrees above pre industrial levels.



Dominique La Fontaine
South East Councils Climate
Change Alliance
Chief Executive Officer



WE ARE IN A CLIMATE EMERGENCY.

IT IS IMPERATIVE THAT GLOBAL WARMING IS LIMITED TO 1.5 DEGREES ABOVE PRE INDUSTRIAL LEVELS.

VISION

The south east of Melbourne is a thriving and productive region that has a safe and sustainable climate.

GOAL

- Achieve zero council corporate emissions and lead action to achieve zero community emissions.
- Provide leadership for the region to reduce greenhouse gas emissions and build climate resilience.
- Prioritise investment to reflect the gravity and urgency of the climate emergency.

PURPOSE

SECCCA leads, facilitates and supports comprehensive regional action that accelerates greenhouse gas emissions reduction and builds climate resilience.

SECCCA provides the following to its members:

- Collaborative projects that address climate change and maximise value for money through economies of scale
- A platform to collaborate and learn about how to address climate change
- Greater influence through regional alignment on climate change policy and action
- Opportunities to unlock investment in exciting and innovative climate change initiatives
- Access to leading climate change expertise
- A gateway to external organisations who seek to engage with the region on climate change action.

COLLABORATION IS THE KEY TO ACHIEVING EFFECTIVE CLIMATE CHANGE OUTCOMES.

SECCCA will continue to build strong partnerships with key organisations, to support them and their stakeholders to address climate change and to strengthen our influence. Key relationship partners include the following organisations.

GREATER SOUTH EAST MELBOURNE (GSEM)



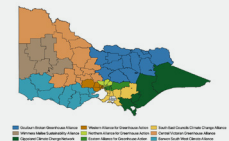
GSEM comprises eight councils with a purpose to advocate for jobs, infrastructure, investment, liveability, sustainability and wellbeing for people living and working in the south east of Melbourne. SECCCA is a member of the GSEM - Regional Stakeholder Group, advocating for socio-economic development strategies to incorporate zero emission and climate resilience initiatives.

SOUTH EAST MELBOURNE MANUFACTURERS ALLIANCE (SEMMA)



SEMMA is an independent body that represents the interests of manufacturers within the south east Melbourne region. A number of SECCCA member councils provide financial support to SEMMA and consider the organisation and the businesses it represents essential to the economic wellbeing of the south east region. As the industrial and commercial sectors make up a substantial portion of the region's emissions, SECCCA aims to support SEMMA and its members to future-proof their businesses by reducing emissions and building climate resilience.

VICTORIAN GREENHOUSE ALLIANCES (VGAs)



There are seven VGAs representing most municipalities across Victoria. VGAs work across their networks, communities, and with partner organisations to deliver regional mitigation and adaptation programs. VGAs also work together to plan and implement joint climate action initiatives that provide economies of scale and enable projects typically beyond the reach of individual councils. Project work is complemented by targeted advocacy, capacity building activities and regional partnerships.

MUNICIPAL ASSOCIATION OF VICTORIA (MAV)



The MAV is a membership association, the legislated peak body and the recognised voice for local government in Victoria. Having made a climate emergency declaration in 2017, the MAV recognises the critical need to act on climate change and has the potential to be a highly valuable partner. SECCCA, VGAs and the MAV can leverage the strengths of each organisation to progress climate action on behalf of councils and communities.

COUNCIL ALLIANCE FOR A SUSTAINABLE BUILT ENVIRONMENT (CASBE)



CASBE is an association of Victorian councils committed to the creation of a sustainable built environment within and beyond their municipalities. The CASBE vision is to enable all Victorian councils to actively lead the creation of sustainable buildings and communities. SECCCA has focused on strengthening its relationship with CASBE, particularly since the establishment of the [New Homes Energy Advisory Service](#).

SECCCA will support CASBE advocacy for environmentally sustainable design.

MORNINGTON PENINSULA AND WESTERN PORT BIOSPHERE RESERVE FOUNDATION



The Biosphere Reserve Foundation is a not-for-profit organisation working with the community to create a sustainable future for Western Port – environmentally, socially and economically. SECCCA is collaborating with the Foundation to undertake climate change related projects such as Blue Carbon resource analysis.

ASSOCIATION OF BAYSIDE MUNICIPALITIES (ABM)



ABM is an incorporated association comprising councils that have frontage to, and are affected by the tidal influences of, Port Phillip Bay. ABM is recognised by the MAV as the key representative of local government in relation to the sustainable management and health of Port Phillip Bay. SECCCA and the ABM will work closely with the impending release of the Port Phillip Bay Coastal Hazard Assessment and the ongoing threat of sea level rise and other coastal impacts.

INNER SOUTH EAST AND SOUTHERN METROPOLITAN PARTNERSHIP FORUMS



[Metropolitan Partnership Forums](#) are advisory groups established by the Victorian Government to enable local communities to engage directly with State and local governments and advise the Victorian Government of the top priorities for jobs, services and infrastructure across the region.

By engaging with these forums, SECCCA will help to promote the importance of climate action to the wellbeing of councils and communities.

AUSTRALIAN LOCAL GOVERNMENT ASSOCIATION (ALGA)



ALGA is the national voice of local government, representing 537 councils across the country. The ALGA platform presents an opportunity to raise climate change issues with the Federal Government.

DEPARTMENT OF ENVIRONMENT, LAND, WATER AND PLANNING (DELWP)



DELWP is the Victorian Government's key climate change agency. Under DELWP's Supporting the Regions to Adapt Program, SECCCA is part of the [Regional Climate Change Adaptation Strategy for Greater Melbourne](#) development. DELWP Emission Reduction Pledges have also been introduced by the Victorian Government as the primary mechanism used in the *Climate Change Act 2017* to help meet the interim targets. Ongoing engagement with DELWP is important to ensure that funding priorities are responding to the needs of SECCCA members.

SUSTAINABILITY VICTORIA (SV)



SV's statutory objective is to facilitate and promote environmental sustainability in the use of resources. It provides practical support for business and the residential sector to reduce emissions and increase energy efficiency as well as sustainable transport. Ongoing engagement with SV is important to ensure that funding priorities are responding to the needs of SECCCA members.

DEPARTMENT OF JOBS PRECINCTS AND REGIONS (DJPR)



DJPR is the Victorian Government's key economic agency. Engaging with DJPR is increasing awareness of the exciting economic opportunities that climate action presents and exploring opportunities for collaboration with SECCCA on climate initiatives.

CLIMATE EMERGENCY AUSTRALIA (CEA)

Climate
Emergency
Australia



CEA is a national network of councils working together to ensure all levels of government acknowledge and respond to the climate emergency with the urgency that is required, based on scientific evidence. To drive greater impact, SECCCA will engage with CEA to ensure that our climate action agendas are aligned.

AUSTRALIAN DEPARTMENT OF AGRICULTURE, WATER AND THE ENVIRONMENT (DAWE)



Through DAWE, the Federal Government supports best practice adaptation to assist businesses and communities to manage their climate change risks. The National Climate Resilience and Adaptation Strategy, due for release in late 2021, will describe a pathway to a resilient Australia. SECCCA will engage with DAWE during the implementation of the Strategy to advocate for support for councils to address climate change. DAWE also facilitates action on blue carbon sequestration and can support SECCCA's work in this area.

AUSTRALIAN DEPARTMENT OF INDUSTRY, SCIENCE, ENERGY AND RESOURCES (DISER)



DISER supports productivity, economic growth and job creation by leveraging Australia's strengths. SECCCA argues that ambitious emission reduction targets are vital to enabling businesses to transition to a decarbonising global economy and ensuring ongoing economic competitiveness of regional economies. SECCCA will engage with DAWE where its programs can assist the delivery of SECCCA's strategic aims.

INSURANCE COUNCIL OF AUSTRALIA (ICA)



The ICA is the representative body of the general insurance industry in Australia. ICA members recognise that climate change presents serious risk to environments, economies and communities worldwide. The ICA supports SECCCA's work in the asset vulnerability space, and together, both organisations are exploring ways to support local government to invest in infrastructure that protects communities from the impact of climate change.

MINDEROO FOUNDATION



Minderoo Foundation is one of Australia's largest philanthropic organisations. Minderoo supports projects that address a range of issues including modern slavery, flood and fire disaster resilience, plastic waste, ocean environments, and community empowerment. SECCCA is working with the Minderoo Foundation to improve community resilience to climate change across the SECCCA region.

ADDRESSING CLIMATE CHANGE REQUIRES A WHOLE OF COMMUNITY EFFORT INCORPORATING ALL LEVELS OF GOVERNMENT, INDUSTRY, AND COMMUNITIES.

Most member councils have declared a Climate Emergency and have committed to reducing their own corporate emissions while supporting the wider community to take action.

SECCCA has developed a regional profile that shows the main sources of community greenhouse gas emissions (Figure 1).

The largest source of greenhouse gas emissions in the SECCCA region is stationary energy, which accounts for 81% of the region's profile. This is comprised of gas and electricity used by: residential buildings; commercial facilities; and manufacturing and construction industries.

The industrial sector is the largest source of emissions, accounting for 35% of the total profile. On-road transportation is the second largest emissions source contributing 25%. Waste and wastewater emissions account for 3% of total emissions.

Industrial processes and product use accounts for just over 3% of the total profile. Industrial processes are those that produce emissions through the chemical transformation of materials, for example the release of carbon dioxide (CO₂) as a by-product of cement production. Product use includes emissions resulting from the use of refrigerants, aerosols, solvents and fire retardants.

Through analysis of the regional emissions profile and consultation with members, SECCCA has developed a number of projects that will support businesses across the south east to reduce emissions and transition to a zero emissions future.

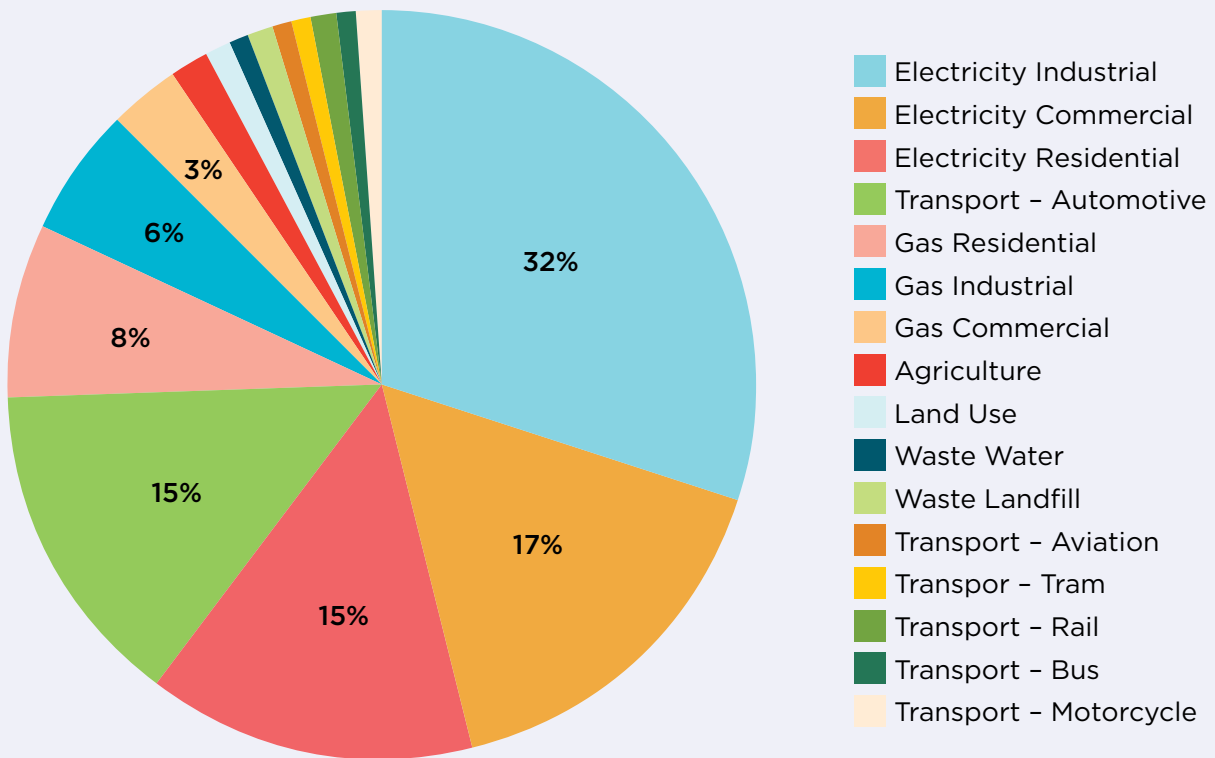
The investment and job creation potential in emission reduction initiatives presents exciting economic opportunities through technologies such as renewable energy, industrial and residential energy efficiency, electrification, public transport, and improved land use.

Supporting emissions reduction also enables a more fair and equitable transition for regional communities currently dependent on high emitting industries.

Emissions drawdown, (approaches that take emissions out of the atmosphere and sequester them), is essential to limit global temperature increases to 1.5 degrees above

pre industrial levels. Like other emission reduction initiatives, drawdown presents economic opportunities, environmental co-benefits and the potential for carbon offsets.

Figure 1. SECCCA Region - Emissions Profile



THE IMPACT OF CLIMATE CHANGE IS A SIGNIFICANT RISK TO COUNCILS AND THEIR COMMUNITIES.

SECCCA's leading edge Asset Vulnerability Assessment Project has analysed the expected impact of climate change on the south east Melbourne region.

The information will be used by councils to ensure that assets and infrastructure are resilient to the changing climate.

The climate change projections draw on CSIRO's latest findings. The modelling was undertaken down to a resolution of 5km² using Moderate (RCP4.5) and High (RCP8.5) carbon emission scenarios, called Representative Concentration Pathways (RCPs).



INCREASED AVERAGE MAXIMUM TEMPERATURE

The general distribution of annual average minimum and maximum temperature varies across the SECCCA region and increases generally from south to north and inland. By 2050, annual average maximum temperatures are anticipated to increase for the majority of the region from 1.1C to 1.5C under an RCP4.5 future, and 2.1C to 2.5C under RCP8.5 future (see Figure 2 on the following page).



MORE HEATWAVES

In addition to increased temperatures, the occurrence of heatwaves is also expected to increase across the SECCCA region. The general distribution of heatwaves frequency is similar to that of maximum temperatures. Under an RCP4.5 future, heatwave frequency across the region is anticipated to increase 2.4-fold by 2050 on average with smaller changes along the coast. The largest increases are expected inland and focussed particularly on Casey and Cardinia. Under an RCP8.5 future, an average 3.9-fold increase across the region is anticipated by 2050.

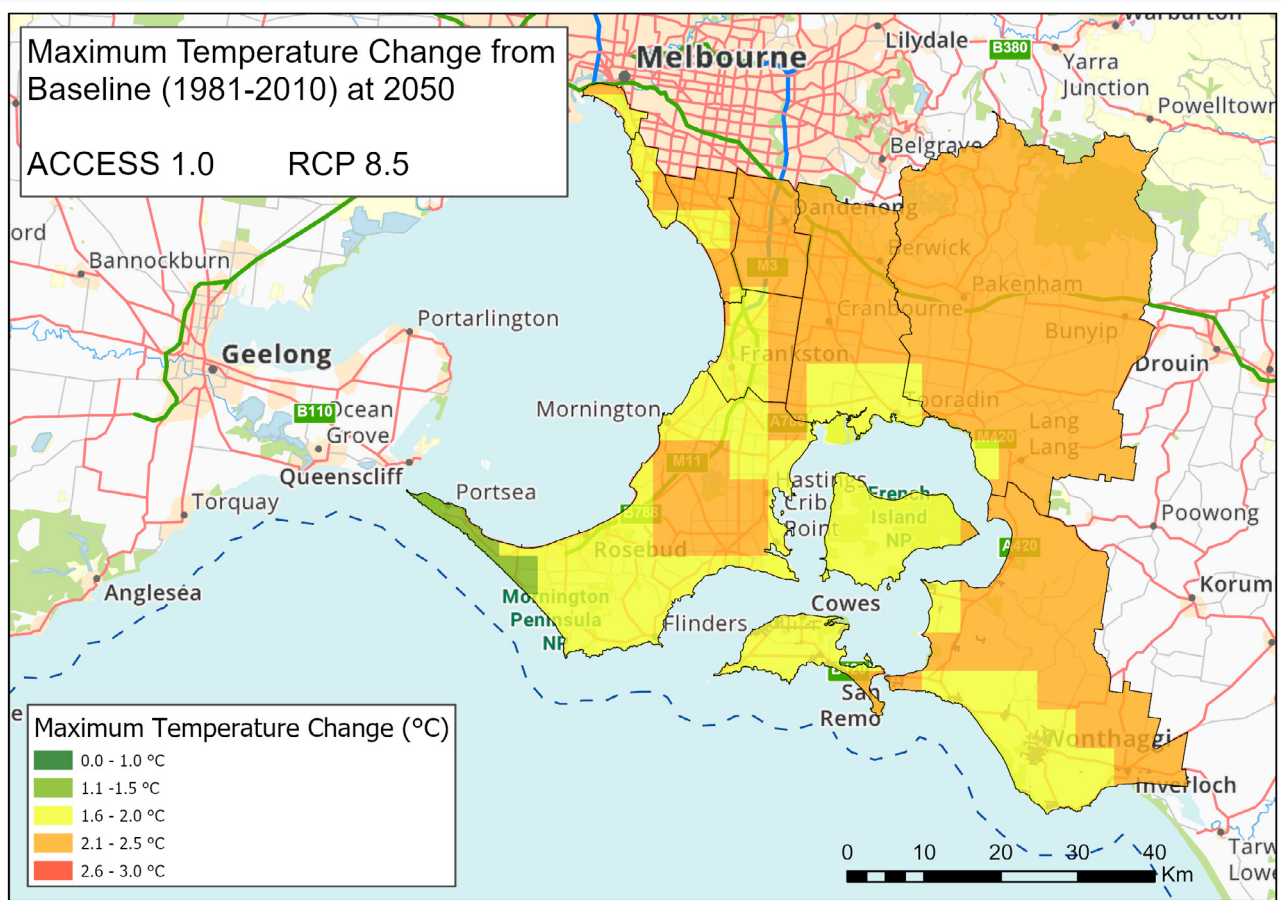
Of greatest concern is that between 2010 and 2019 there has already been a 1.8-fold increase in heatwaves compared to 1981 - 2010 baseline period used in the CSIRO's climate projections.

As a result, Australia’s fire season has lengthened and the number of days with extreme fire danger has increased along with the risk of bushfires.

Using the HadGEM2-CC model that represents a hotter and drier future, and under an RCP8.5 scenario, heatwave

frequency across the region is anticipated to increase around 8-fold by 2050.

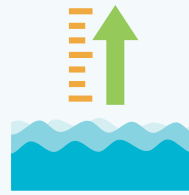
Figure 2. The modelled changes in annual average maximum temperatures by the year 2050 using the ACCESS 1.0 maximum consensus model for an RCP 8.5 future.





EXTREME WEATHER EVENTS

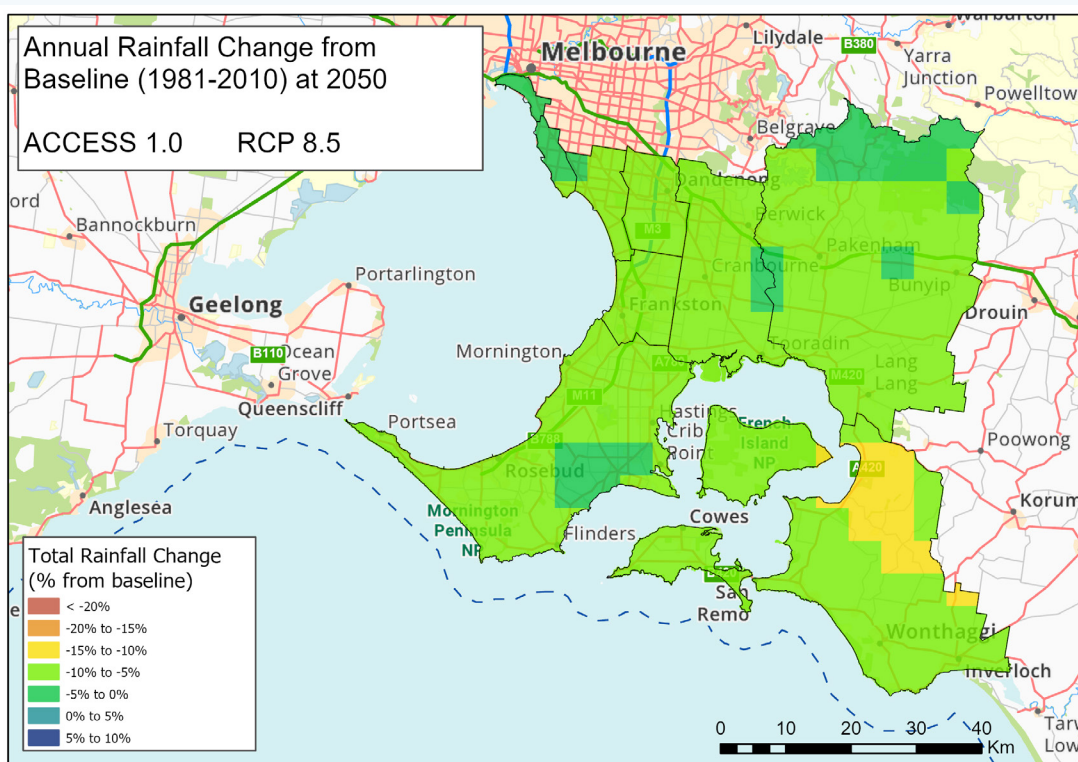
Unlike much of Victoria, the SECCCA region is expected to vary little in its total annual rainfall over the forecast period, although it is expected to have longer dry spells interrupted by more intense rainfall events. Annual rainfall distribution across the region increases generally from west to east and inland, particularly with elevation. It is anticipated that the majority of the region will experience a reduction in annual rainfall of up to 5% under an RCP4.5 future, and by 5 to 10% under RCP8.5 by 2050 (Figure 3). A reduction of 5 to 10% in annual rainfall with continued population growth will have considerable impacts on the region and water security.



INUNDATION AND SEA LEVEL RISE

Communities across the SECCCA region will increasingly feel the impact of inundation as the frequency and intensity of storm surges and overland flooding events increase into the future. Inundation caused by storm surge events, particularly with the rising sea levels, are concentrated on coastal regions and river inlets, such as the areas around Westernport and on the bayside sections of Kingston and Frankston. Inundation caused by riverine and/or overland flooding impact a more extensive area across the SECCCA region, both in coastal regions and low-lying inland areas, particularly in more severe events such as a 1 in 100 year flood.

Figure 3. Modelled changes in Annual Rainfall by the year 2050 using the ACCESS 1.0 maximum consensus model for an RCP8.5 future.



SINCE THE INITIAL STRATEGIC PLAN, MEMBERS HAVE EXPRESSED UNEQUIVOCAL SUPPORT FOR THE INTENSIFICATION OF SECCCA'S ADVOCACY AND COMMUNICATIONS EFFORTS.

SECCCA'S STRATEGIC ADVOCACY AIMS

- Support the Paris Climate Change Agreement through advocacy, calling for urgent climate action to limit global temperature rise this century to 1.5 degrees Celsius above preindustrial levels.
- Advocate to influence the transition to a zero emission and climate resilient south east.
- Play a leadership role in challenging members collectively to be ambitious and lead the response to the climate emergency.
- Advocate to influence public policy, regulation and programs that accelerate emission reduction and build climate resilience and support local government capacity to address climate change.

KEY ADVOCACY ISSUES AND OUTCOMES

Members have agreed that SECCCA's advocacy efforts should be focussed in the following areas:



PLANNING AND REGULATION

Reforming the planning and building frameworks to support a net zero south east Melbourne region, liveable cities and resilient communities.



LEADERSHIP AND COLLABORATION

Leading the south east Melbourne region to respond to the climate emergency through greenhouse emissions reduction and building climate resilience.

Collaborating with regional partners to leverage influence and to efficiently deliver outcomes.

Advocating for government policy change and funding to build a safe and resilient region.

**FINANCE AND RISK**

Helping local government and the community to understand, report and manage the financial and economic impacts of climate change on the economy.

**PROCUREMENT**

Facilitating net zero emissions and climate resilience in local government and business supply chains.

**INFRASTRUCTURE AND SERVICES**

Supporting local government to understand and manage localised impacts of climate change on assets, infrastructure and councils' services.

SECCCA will increase its advocacy to the Victorian Government and where appropriate the Federal Government, to improve regulation that supports decarbonisation and climate resilience, while supporting councils to address climate change.

THE OVERWHELMING FEEDBACK FROM THE STRATEGIC PLANNING SESSION WAS FOR SECCCA TO DEMONSTRATE REGIONAL LEADERSHIP THAT WILL ACCELERATE CLIMATE ACTION.

SECCCA has considered, evaluated, and then prioritised projects and initiatives according to their capacity to achieve SECCCA's vision, goal and purpose, the expected climate impact and resourcing required.

Members understand that taking transformational action on climate change at any significant level will require equally significant investment to reduce emissions.

By working regionally and collaboratively, climate change outcomes for councils and their communities can be delivered cost effectively. Councils and communities also benefit from knowledge sharing and capability across the region.

These projects and initiatives are ranked as follows.

CARBON SEQUESTRATION PROGRAM

Sequestering carbon and greenhouse gas emissions, called drawdown, is an essential requirement to ensure global temperatures do not rise above 1.5 degrees, aligning with the Paris Climate Agreement. While there is still work to be done to calculate the impact of specific carbon sequestration approaches, they offer social-economic and environment and climate benefits by removing greenhouse gas emissions from the atmosphere.



Regional Carbon Sink Study

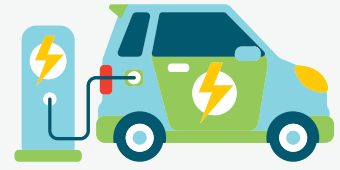
Through an investigation of carbon sequestration opportunities across the SECCCA region, members will understand how their council and community can invest in initiatives that contribute to emissions reduction targets, achieve net positive emissions and produce secondary socio-economic benefits.

Biosphere Blue Carbon Project

The Westernport Bay and Port Phillip Bay are recognised as important areas for Blue Carbon – where coastal wetlands, seagrasses, mangroves and salt marshes act as carbon sinks. Protecting these habitats ensures carbon drawdown is enabled, resulting in environmental benefits. Work is underway to unlock the commercial value of blue carbon sinks and inform councils about the drawdown opportunities across the region.

ZERO EMISSIONS TRANSPORT PROGRAM

The transport sector is a key emitter of greenhouse gas emissions. The transition away from combustion engines is inevitable and occurring at a fast pace.



Electric Vehicle Charging Infrastructure Roadmap

This project will identify the priority locations for the installation of electric vehicle charging stations across the region in the five participating council areas; develop a template policy to help guide councils as they manage their role in the transition to electric vehicles; and consider what is on the horizon.

Transitioning Council fleets to electric vehicles

SECCCA has already completed an extensive review of councils' light vehicle fleets. This includes the opportunities and barriers that councils face with an increased uptake and transformation of their fleet. SECCCA is now exploring the financial drivers behind fleet transition and will review the issues involved in transitioning commercial and contractor vehicles.

ZERO EMISSIONS BUILDINGS PROGRAM

SECCCA has gained substantial practical expertise through the implementation of projects that reduce emissions and improve the energy efficiency of residential and commercial buildings. SECCCA has recently started working in the small business sector to increase the uptake of energy efficient appliances and equipment. There is significant opportunity for SECCCA to leverage this experience to support further emissions reduction for councils and the community.



Residential Energy Efficiency Advocacy

Through past projects, SECCCA has developed evidence-based guidance on how to build zero carbon homes. The challenge now is to share this information with, and influence, industry stakeholders and decision makers in an effort to change regulatory frameworks and building practices. The SECCCA region is home to some of the fastest growing residential corridors. Influencing change in this space will support substantial emission reduction and, importantly, the construction of homes that are more comfortable to live in and cheaper to run.

Small Business Energy Saver Program

SECCCA will provide expert advice to small businesses located in the region as part of Sustainability Victoria's Small Business Energy Saver Program. This program will help small businesses' economic recovery from COVID-19 impacts through the uptake of energy efficient applications and equipment.

BriefEzy

BriefEzy is a tool that efficiently outlines the sustainability requirements of each council building project. Council officers generate a report that is included as part of the building's specifications in tender documents when seeking architectural services. SECCCA aims to ensure that

BriefEzy is continually updated with current specifications and will support councils to implement environmentally sustainable design compliance and verification against zero emission plans and targets. This critical next step will ensure that policies translate into measurable and verifiable emissions reduction.

ZERO EMISSIONS INDUSTRIAL AND COMMERCIAL PROGRAM

The industrial sector is the largest source of emissions in the SECCCA region, accounting for over one third of the total emissions. SECCCA will support stakeholder groups and businesses in the industrial sector to reduce emissions by providing capacity to support engagement in opportunities that can deliver a reduction in emissions in areas including energy efficiency and clean energy uptake.



Projects identified by SECCCA members include:

- Supporting the transition away from gas via electrification
- Facilitating the update of energy efficient technology and appliances
- Facilitating the uptake of LED lighting across the region with bulk buy of LED technology for buildings
- Supporting implementation of a Renewable Energy Power Purchase Agreement that will secure zero carbon energy and reduce volatility of power prices
- Facilitating the roll-out of rooftop solar systems and storage across the industrial sector
- Facilitating the development of innovative renewable energy technology in industrial areas. This initiative presents opportunities to partner with research centers, tertiary institutes and universities to trial new science and technology
- Empowering industrial businesses and technology providers with information about energy efficiency technology for large plant and equipment such as efficient HVAC, heat pumps and variable speed drives
- Building capacity in the community to establish community power hubs.

COUNCIL AND COMMUNITY EMISSIONS REDUCTION PROGRAM

SECCCA members continue to strive to achieve their ambitious emissions reduction targets. Projects that have been identified will provide direct support to councils and their communities to reduce emissions across the region.



Zero Supply Chain Emissions

Councils can drive down emissions by requiring suppliers to reduce emissions across their own production processes and supply chains. This project will develop guidelines, tools and capacity so councils can support their suppliers to commit to zero carbon. The project will embed zero carbon policies across council procurement practices.

Guide for Conversion of Gas Assets to Electric

As councils implement zero emission targets, they also need to transition council owned buildings away from gas. This project will provide a 'how to' guide on converting council buildings to operate with 100% renewable electricity.

Greening Council Tenancies

Councils' building stock is mostly leased to community organisations, sporting clubs and other groups. This project will design tenancy provisions that drive improved energy consumption and increase the uptake of renewable energy to reduce emissions.

Zero Emissions South East Project

GSEM, SECCCA and the Monash University Net Zero Initiative will produce a roadmap to achieve zero emissions in the south east Melbourne region. This builds on the emissions profile work already completed by SECCCA.

CLIMATE RESILIENCE PROGRAM

The impacts of climate change present significant challenges for local government and their communities. Regional modelling of climate impacts demonstrates how climate change is projected to impact the SECCCA region and can now be used to support planning and decision making for councils and their communities. The Climate Resilience Program continues work in this very important area.



Asset Vulnerability Assessment Project

This project assists members to understand how buildings, roads and drainage will be impacted by climate change and how in turn councils' income and expenditure will be impacted. SECCCA will support capacity building to facilitate project outputs informing decision-making to make assets

more resilient to climate change. More work is required to regularly review vulnerability assessments and to ensure that climate risk data is continually updated with the best science available. This project is the foundation for ongoing work on climate resilience.

Financial Physical Risk Infrastructure

This project will identify funding opportunities and models to provide finance for the delivery of the risk mitigation infrastructure. The project builds on the work that SECCCA and the Insurance Council of Australia have undertaken to develop a pathway that will deliver risk mitigation infrastructure that will ultimately protect communities from the increasing frequency and intensity of extreme weather.

Community Climate Resilience

In partnership with the Minderoo Foundation, this project will ensure communities are prepared for the impacts of climate change. Practical actions, tools, and resources will ensure participants are empowered through access to information and services to make the best decisions for themselves and their families.

Cost Benefit Analysis of Climate Change for local government

As part of the Regional Climate Change Adaptation Strategy for Greater Melbourne, and together with Northern Alliance for Greenhouse Action, the Eastern Alliance for Greenhouse Action, the Western Alliance for Greenhouse Action, SECCCA is developing a cost-benefit analysis framework that will help councils better understand the costs and benefits of various climate change adaptation options.

Victorian Climate Resilient Councils

Victorian Climate Resilient Councils (VCRC) is a program currently in development to support local government's response to climate change risks. WAGA is leading the program in partnership with RMIT University with support from Victorian Greenhouse Alliances and the Victorian Government through the Regional Climate Change Adaptation Strategy for Greater Melbourne. VCRC will provide a 'home' for local government adaptation in Victoria, with staff, expertise and resources to guide councils through a clear step-by-step sequence of actions to facilitate understanding of climate risks, internal and community engagement, knowledge building, adaptation planning, and project implementation.

SECCCA HAS STRENGTHENED ITS FINANCIAL POSITION AND OPERATIONAL BASE.

SECCCA has proven its ability to deliver complex regional climate change projects and to advocate on behalf of councils and their communities.

SECCCA will pursue an ambitious climate change agenda, one that leverages regional collaboration to support councils to address their corporate climate change goals, and also supports their communities to address climate change.

There are some projects and initiatives that SECCCA will be able to deliver with existing membership fees. However, to deliver on the full ambition of this Strategic Plan additional resourcing will be required. SECCCA will seek support from current and new partnerships with organisations such as member councils, philanthropic funding bodies, Victorian Government, Australian Government and others.

SECCCA IS A LOCAL GOVERNMENT, NOT FOR PROFIT, INCORPORATED ASSOCIATION.

MANAGEMENT COMMITTEE

SECCCA's organisational structure relies on significant investment of council officer time. SECCCA's member councils nominate two officers to participate in the SECCCA Management Committee. The Management Committee's governance focus is overseeing the operation of the organisation and the development and implementation of the Strategic Plan.

Two subcommittees – Governance Risk and Finance, and Projects – focus on specific governance requirements for the organisation.

COUNCILLOR ADVISORY GROUP

Established in 2019, the SECCCA Councillor Advisory Group (CAG) is made up of one or two councillor representatives from each SECCCA member.

The purpose of the CAG is to:

- Provide advice on SECCCA's strategic direction
- Support the implementation of the SECCCA Strategic Plan through advocacy to political representatives, community and business groups, Councillors and Council staff
- Review information on SECCCA activities.

SECCCA's Rules of Association will be updated to formally include the CAG.

Management Committee
(President, Vice President, Secretary, Treasurer)

Governance Risk and
Finance Subcommittee

Projects
Subcommittee

Councillor
Advisory
Group

MEMBER COUNCILS' CLIMATE COMMITMENTS

SECCCA COUNCIL	EMISSIONS REDUCTION TARGETS (COUNCIL)	EMISSIONS REDUCTION TARGETS (COMMUNITY)	CLIMATE ACTION & CLIMATE EMERGENCY
Bass Coast Shire Council	Zero net emissions by 2030 for council operations	Zero net emissions by 2030 for community	Climate Change Action Plan 2020-2030
Bayside City Council	Carbon neutral by 2020 (achieved)	To be set by Council in 2021	Climate Emergency Action Plan 2020-2025
Cardina Shire Council	Zero net emissions by 2024 for council operations	Support the community to reduce emissions by 36% by 2024	Aspirational Energy Transition Plan 2014-24
City of Casey	100% corporate energy supply met through renewable energy sources by 2025. Zero net emissions by 2030 for council operations	To be considered by Council in 2022	Casey Community Climate Action Plan (due for completion 30 June 2022)
City of Greater Dandenong	Zero net emissions by 2025 for council operations	Increased recognition by the community of the importance of responding to climate change	Climate Change Emergency Strategy
Frankston City Council	Zero net emissions by 2025 for council operations	To be considered by Council in 2021-22	Climate Change Strategy and Action Plan (to be developed)
City of Kingston	Zero net emissions by 2025 for council operations	Support the community to reduce emissions by 40% by 2025. Achieve net zero by 2030	Climate & Ecological Emergency Response Plan
Mornington Peninsula Shire Council	Carbon neutral by 2021	Achieve net zero emissions by 2040	Climate Emergency Plan
City of Port Phillip	Zero net emissions by 2020 for council operations (achieved)	Achieve net zero emissions by 2050	Sustainable Environment Strategy 2018

THESE VALUES GUIDE SECCCA, THE MANAGEMENT COMMITTEE AND THE COUNCILLOR ADVISORY GROUP

- **Consensus:** SECCCA aspires to make all decisions through consensus.
- **Participation:** all members can contribute to all decisions made.
- **Equity:** all members are equally recognised in activities and have equal access to resources.
- **Professionalism:** SECCCA conducts itself in a credible and professional manner.
- **Transparency:** all actions and decisions are made in an open and transparent manner.
- **Collaboration and co-operation:** The SECCCA structure promotes collaboration and co-operation, facilitating a free exchange of ideas and open communication.
- **Respect, integrity and trust:** SECCCA's culture is based on integrity, trust and respect for each other, for the community, for the planet and its diversity.

FURTHER INFORMATION

If you would like further information on this Strategic Plan,
please email enquiries@seccca.org.au

www.seccca.org.au

